

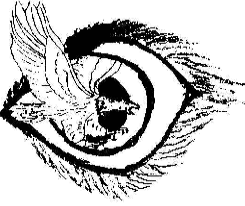
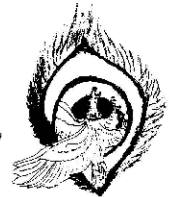


Mike "Eagle Eye" Andrews & Cliff "Winter Fox" Buchanan

Why a Vision Quest ?

If you feel that you are at a crossroads in your life or if you have questions about the intent and purpose for your life, then you may benefit from a Vision Quest. Example questions that a Vision Quest may help you answer include: What is my life purpose? What is my gift? What are my special talents and how can I manifest them? What am I supposed to be bringing to the world to make it better? A Vision Quest is a gift to yourself of time to pray about these and other questions you are facing and to Quest for a vision.

This Vision Quest is in Marcellus Bear Heart Williams' tradition. Bear Heart is an internationally known Muskogee Creek elder born in Oklahoma 88 years ago. He is the author of *"The Wind Is My Mother: The Life and Teachings of a Native American Shaman."* Mike Eagle Eye Andrews and Cliff Winter Fox Buchanan are the organizers for this Vision Quest. Eagle Eye and Winter Fox were authorized to Sponsor and Lead Vision Quests in Bear Heart's tradition in 2004. Eagle Eye was the Sponsor of the September 2005 and May 2006 Vision Quests and will be the Sponsor for the September 2006 Vision Quest. At the September 2006 Vision Quest, Eagle Eye will be sending people out on their Vision Quest, helping them understand their visions, and giving them a Vision Quest name.



Cliff Buchanan
1404 Castle Road
Odessa TX 79762



BEAR HEART VISION QUEST

SEPTEMBER 6 THRU 10, 2006

CLOUDCROFT NM

SPONSOR: MIKE ANDREWS

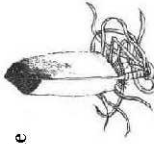


Mike Andrews "Eagle Eye" (left)
Bear Heart (right)

Registration

Space is limited to 12 Questers. Ideally, there should be at least one Supporter for each Quester but we do not limit the number of Supporters. If you decide you want to participate in a Vision Quest as a Quester or a Supporter, please notify Cliff Winter Fox Buchanan (432) 550-3302 (email: Cliff@ISISoftware.net), 1404 Castle Road, Odessa TX 79762 or Mike Eagle Eye Andrews at (505) 776-0001 (email Laughs@newmex.com), PO Box 577, Arroyo Seco NM 87514 or you may RSVP online at:

http://www.gatheringofcircles.com/register_attendance_vq.htm Registrations for this Vision Quest are processed through the Gathering of Circles (GOC) web-site. You can find more information about the GOC at:



www.GatheringOfCircles.com If you are new to the Gathering of Circles, you also should register at <http://www.gatheringofcircles.com/register.htm>

Donations

We never turn anyone away for lack of funds. If you need to make special arrangements, please talk to Eagle Eye. The suggested donation for Questers is \$300 and for Supporters it is \$150. All meals are provided. More specific information will be provided following your registration.

Further Information

More detailed information on Bear Heart Vision Quests may be found on-line at:

http://www.gatheringofcircles.com/2006/2006_vq_sep.htm

Other resources are Bear Heart's book: "*The Wind Is My Mother*" and Bear Heart's web-site, www.BearHeart.info. Eagle Eye and Winter Fox are always willing to answer your questions about Vision Quests.



Questers and Supporters

As a Quester, you will be alone in the wilderness for up to three nights (up to four days) without food or water. There you will experience Mother Nature... sometimes hot, sometimes cold, sometimes dry, sometimes wet... always ever changing, but you will always be receiving the blessings of Mother Nature. You will be open to the skies day and night, with your only shelter a blanket and possibly a tarp if it rains. You might say, "Why would I put myself through that?" The answer is to "Cry for a Vision" to seek answers to questions about the direction of your life, to experience yourself. You will learn that you are not alone and that many have gone before and are glad they did. This process may change your life, alter your direction, and give you new eyes to view your life, your work, and your relationships. You will learn about your physical body, your mind, and your emotions. You will learn to face your fears and overcome them. Although you will be alone on your Vision Quest, many Questers learn about "community" during their Vision Quest.

Each Quester will choose a Supporter. Perhaps it will be someone you have known for a long time. Maybe they will ride down together to the Vision Quest. Or perhaps it will be someone they just met after they arrived. It could be a man or a woman. Oddly, the Creator picks the perfect Supporter for him/her at that point in time. Once the person accepts the request to be the Quester's Supporter, the responsibility for the well-being of the Quester lies with the Supporter. Do not accept this task lightly. The Supporter goes to the Quester's site and checks on them daily, but does not communicate directly with the Quester since it is important that the Quester does the work. A strong bond connects the two of them for the duration of the Quest and often much beyond that limited time.

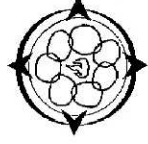
A fire is started when the Vision Quest is begun and is never extinguished until all the Questers return. Supporters take their turn at the night fire vigil to keep the fire going and to pray for the Questers to keep them safe from all harm. Seeing the Questers coming back from the "mountain" with their visions and all the benefits of their visions might encourage a Supporter to "sit on the mountain" as a Quester in the future.

**Plan to arrive by 3:00 pm,
Wednesday, September 6, 2006**

Directions: Go to Cloudercroft, New Mexico. Take Hwy 130 South out of Cloudercroft for 1.2 miles. Turn left at Sleepy Grass Campground or 0.7 miles. Turn right on 5661 for 3.9 miles. Turn left at 5661 marker, look for forked tree on left before turn. Then turn left again immediately (about 40 feet) and follow road. Signs will be posted.



**Bear Heart, September 9, 2004
Cloudercroft NM**



Bear Heart sketch by Darrell Caraway

